

COLOR MANUAL



NUANCE

INDEX

Nuance professional Crema	1
Sensitivity Test/Basic color application	
Color Application - Virgin Hair	2
Color Application—Basic	3
Nuance Crema & Contrast	4
Photo	5
Mixing ratio	6
Choosing the peroxide / Application Times	7
How to use the Super lighteners & Baltic Blondes	8
Colouring white Hair	9
Filling the hair for a tint back	10
Choosing the correct Filler	
Neutral—What is it's purpose?	11
Creating a Semi/Demi Permanent	12
Counteracting Reflects	13

Nuance professional Crema

1

Nuance is a technically up to date ,no frills professional color.82 brilliant shades with extremely vibrant hues. A professional range that is simple to use, based on ceramides to retain moisture,and strengthen the hair whilst processing.Nuance professional Crema is a blue based formulation.Neutralising warm reflects from light tones becomes an easier process allowing for cooler blonder results.Traditionally we find that green based colors are great for neutralizing darker hair although they tend to struggle when it comes to counteracting warmth from blondes,this is why Nuance offers an easy solution giving the hairdresser the flexibility to achieve warm dark shades and cool light tones.

The result : fantastic coverage great reflects and beautiful shine.A back to basics color with all that you would expect from a scientifically advanced formula.

Sensitivity Test

It is always advisable to carry out sensitivity tests prior to using any colour for the first time. This is done by applying a small amount of color on the inside of the arm or just behind the ear. Leave it for 24 hours to see if any allergic reaction occurs.

Once this test has been carried out with no allergic reaction then you are free to proceed.

COLOR APPLICATION

VIRGIN HAIR –Always apply the colour 2 inches away from the roots right through to the ends and process for *half the recommended processing time.

Once processing time is complete apply remaining color to the roots and process for the remainder of the recommended processing time.

Please take note:

- Cover the hair evenly making sure all hair has been saturated with colour.

- Allow 10 minutes extra for covering grey hair.

- Once you are ready to wash product out, apply a small amount of water to the hair and emulsify by massaging the scalp and hair line to remove any residue. Wash with warm water.

- A light shampoo and a mild colour saving treatment should be used to lock in colour and relax the cuticle.

- Proceed with your next service.

*If color processing time is 30 minutes leave on midlengths and ends for 15 minutes then apply and process the roots for the last 15 minutes.

COLOR APPLICATION

3

BASIC – Part the hair down the centre of the head and from ear to ear. This divides the hair into 4 sections. Start application of colour around the hairline making sure to apply enough colour for complete coverage to the regrowth only.

Once all the regrowth has been covered, process the colour for 20 minutes.

After the processing time is complete, mix required colour and apply to the rest of the hair.

- To refresh existing color on midlengths and ends please adjust developer strength accordingly.
- When changing current reflect please take appropriate measures to ensure color retention.

For Example:

- Current reflect is a faded 8.43 and your desired color is 6.32, you must fill the faded hair with orange or proceed with the back to back method of filling with a semi permanent to build the strength of the pigment.
- If you use the back to back method do not use a developer higher than 3% for the first application. Apply and process for 20 minutes, then rinse.
- Re apply, mixing 5.23 with activator ,process for 15 mins using heat (accelerator/steamer).
- Rinse the color out thoroughly. Shampoo and Condition, style as normal.
- With any process please allow 10 minutes extra for covering grey hair.

NUANCE CREMA & CONTRAST

4

Note: Nuance is a blue based formula therefore you may be required to choose one shade lighter than usual for your base color. Blue based colors may appear darker than green based formulas keep this in mind when explaining the final result to your client.

Example; Desired level 5 use level 6.



Nuance **Contrast** is a lift and deposit series of vibrant fashion nuances.

COPPER

COPPER RED

DEEP RED

VIOLET

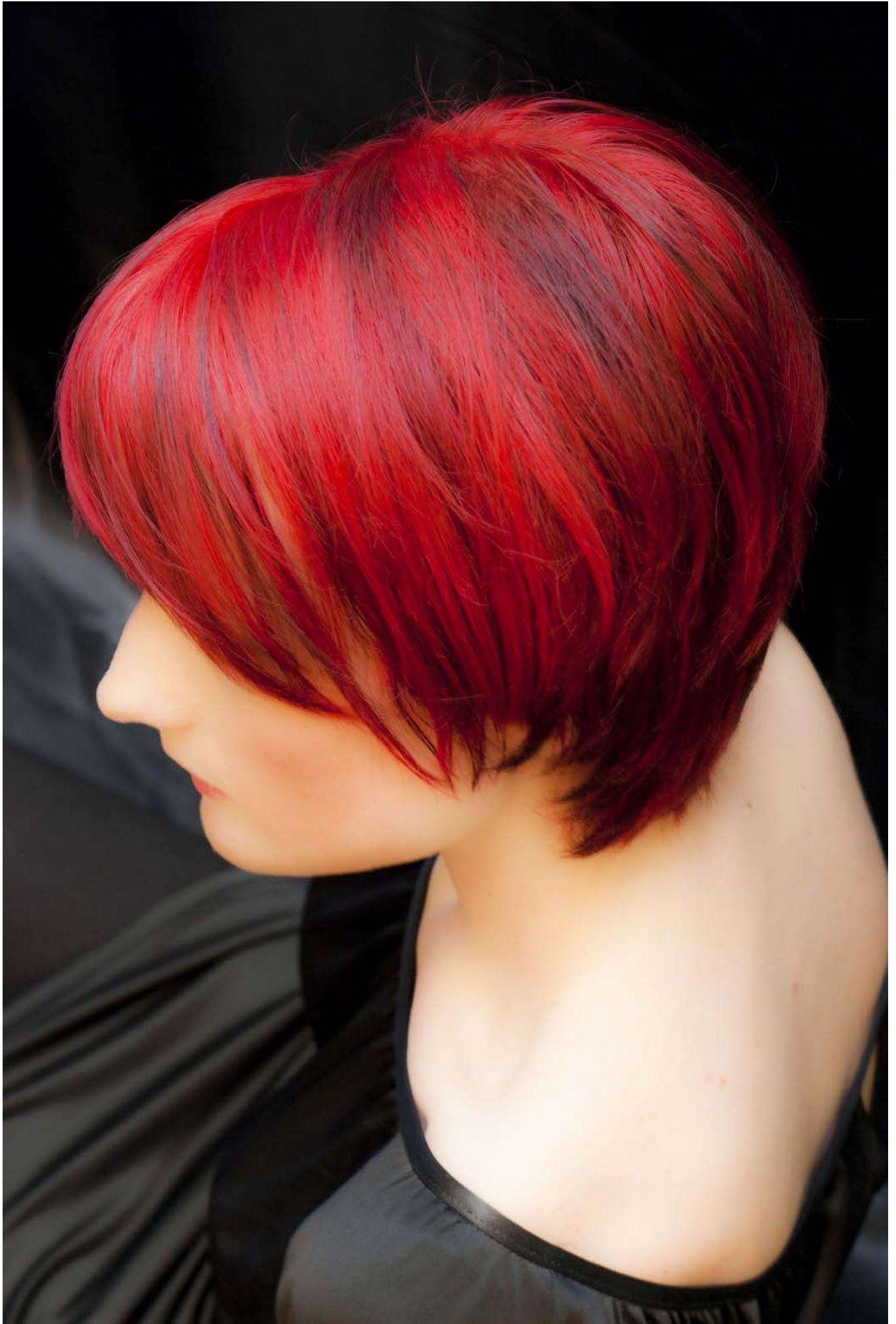
Used with 40 vol peroxide it will lift and deposit the reflect without the requirement for pre bleaching.

RICH VIBRANT COLORS

Use as directed one part color + two parts peroxide.

Bright color in one easy application!!





MIXING RATIO OF Nuance Professional Crema 6 AND PEROXIDE

1 + 1.5

1 x 100ml tube of Nuance Professional Crema

+

150ml of cream peroxide

On 0% to 50% of white hair

Alternatively 1 + 1

1 tube 100ml + 100ml of peroxide

On 50% to 100% white hair

Always assess each individual client. Some hair is coarser than others, some hair is more resistant. This is only a guide from which you can diversify to suit your needs.

From 0% to 50% white	Use 1/4 .0 with 1/2 desired
From 50%to 100% white	Use 1/2 .0 with 1/2 desired reflect

If using an accelerator treatment times are considerably reduced

Choosing the Peroxide



Creme Peroxide 10 volume	<ul style="list-style-type: none">-To color the same base tone hair-To deepen color (to darken)-To give color reflections-To color or tone hair that has been pre lightened
Creme Peroxide 20 volume	<ul style="list-style-type: none">-To cover white hair-To enhance reflections-To lift natural hair color up to 2 shades
Creme Peroxide 30 volume	<ul style="list-style-type: none">-To lighten up to 3 shades-For resistant hair-To enhance warm reflections-Covers white hair translucently
Creme Peroxide 40 volume	<ul style="list-style-type: none">-For use with super lightener series-To lighten up to 4 levels

Application Times

30 minutes	<ul style="list-style-type: none">-To cover and color tone on tone and darker tones
40 minutes	<ul style="list-style-type: none">-To lighten 1-3 levels-To cover and color white hair
45 minutes	<ul style="list-style-type: none">-To color, to cover and give reflection-To lighten 4 or more levels-To cover and to color resistant, white hair

HOW TO USE THE SUPERLIGHTENERS & BALTIC BLONDES

8

Use the 10.series and 12. series to lighten virgin hair from a level 6 to 10. Below you will find various ways of mixing the super lightener & Baltic series to achieve optimum results.

ADD MORE PEROXIDE	30 ml of Superlightener Or Baltic blonde series	+	60 ml of 30 Vol Peroxide or 40 Vol Peroxide
--------------------------	--	----------	--

ADD SOME NEUTRAL	1 tube of Super lightener 10 or 12 series	+	1/4 tube of 10.00 (Neutral) To boost 1/2 a level of extra lift
-------------------------	--	----------	---

ADD SOME BLEACH	1 tube of Super lightener or Baltic Blondes	+	1 to 2 scoops of bleach To give extra lift of 1 level+
------------------------	--	----------	---

Coloring White Hair Is Easy

9

0% – 50% White Hair

Reflect + $\frac{1}{4}$ of .0 Natural for 100% coverage

50%– 100% White Hair

$\frac{1}{2}$ Natural shade (.0) + $\frac{1}{2}$ Reflect plus equal part peroxide for 100% coverage and reflect deposit.

Alternatively, mix 1 part .0 +1 part reflect to 1.5 parts peroxide to achieve a translucent result.

**Remember using 3% peroxide will deposit color.
6% peroxide will cover grey hair and give you lift .**

FILLING THE HAIR FOR A TINT BACK

Color Formula

Client's hair: Blonde hair, base level of 9 or 10
Desired result: level 5

- Apply orange filler evenly to the hair
- Dry the filler into the hair
- Mix 5.0 with desired reflect and 10vol peroxide (1+1)
- Apply from roots to ends and process for 40 minutes.

Choosing the correct filler

1.0 to 4.0 filler is **RED**

5.0 to 7.0 filler is **ORANGE**

7.0 to 10.0 filler is **YELLOW**

Creating a filler

Mixing a red filler: equal parts 6.6+ activator

Mixing an orange filler: equal parts 8.4+ activator

Mixing a yellow filler: equal parts 8.3 + activator

Remember if the hair is porous always choose a shade lighter than the desired result for initial tint back

NEUTRO – WHAT IS ITS PURPOSE?

Neutro- Clear

Neutro is used to add shine and create lighter and brighter shades.

It can lift up to ½ a shade on its own.

It can be safely added to the Super lighteners to boost color

Add to your reflects for a more vibrant color and to lift an extra half a shade.

Also fantastic on it's own with activator for shine.

Obtaining extra lift using our Neutro

Add 2-4cm Of Neutro To 5.0 = 5½ Neutral

Add 2-4cm Of Neutro To 7.1 = 7½ Ash

Add 2-4cm Of Neutro To 6.4 = 6 ½ Copper

CREATING A SEMI/DEMI PERMANENT

- ♦ Nuance fills the hair shaft with color and deposits without creating a demarcation line .
- ♦ As a semi Nuance does not permanently penetrate the cortex.
- ♦ It will last between 6 – 8 weeks (up to 24 washes).
- ♦ It can highlight or deepen natural color.
- ♦ Bleached or white hair will blend with a translucent appearance.
- ♦ Can also be used as a color filler for tinting over bleached hair.
- ♦ It is a wonderful way for the client to enjoy color and shine between tints.
- ♦ Many of you will have your own formula for mixing a semi-or demi permanent. This is the formula that we recommend.

1 Part Color + 1 Part Activator + 1 part Shampoo

1 part color + 1 part Activator + 1 part shampoo = semi-permanent
1 part color + 2 parts 10 vol. = demi-permanent

METHOD

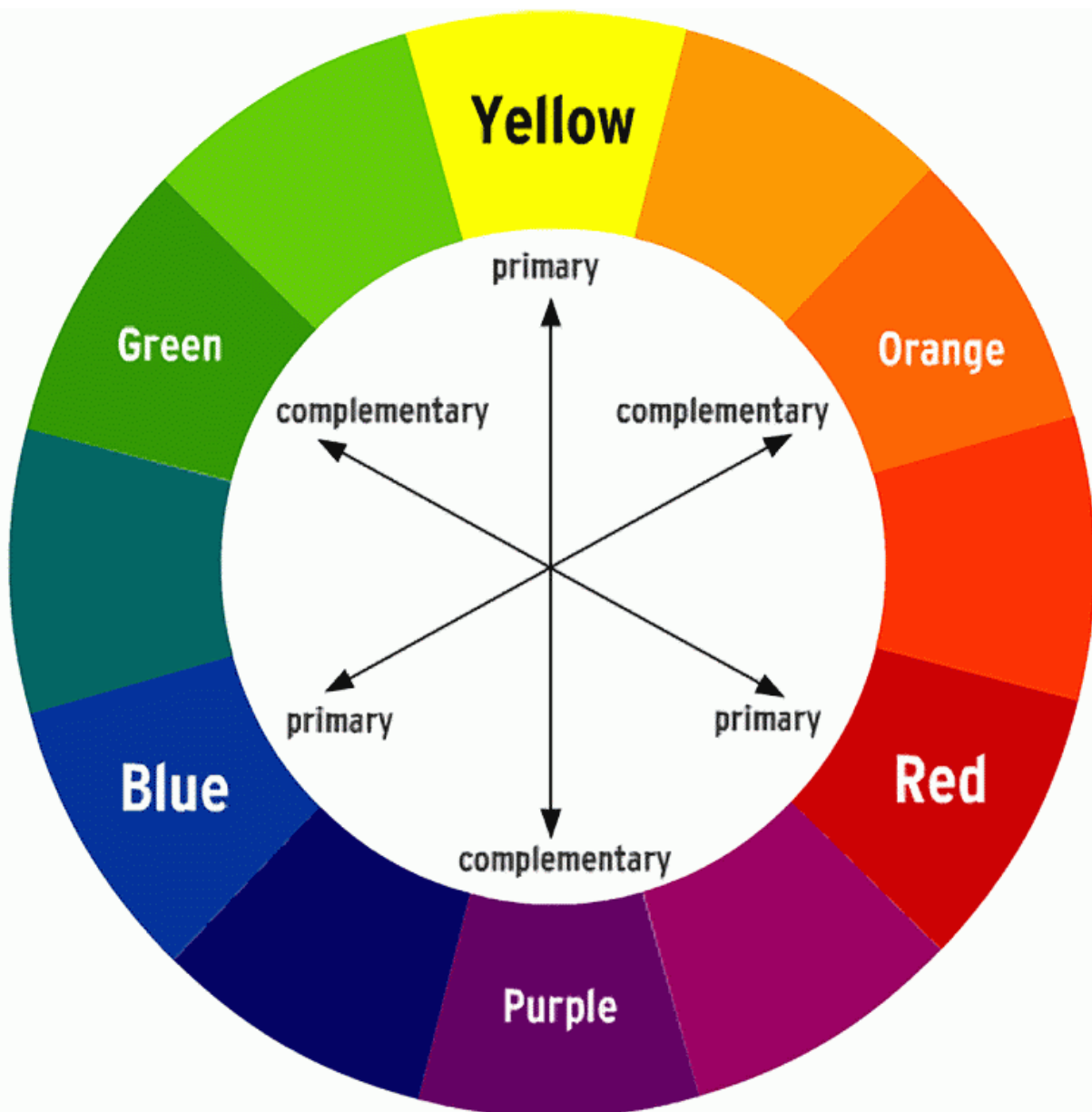
- Shampoo hair gently with a clarifying shampoo and towel dry
- Apply Semi / Demi permanent color
- Leave on hair for at least 15 min with heat
- Rinse and condition

Popular Choices For Semi/Demi permanents

6.32 & 7.32	6.4 & 5.6
Deep warm hazelnut with violet overtones Warmth without too much red!	Stunning reds/coppers for a more dramatic effect!

COUNTERACTING REFLECTS OVERRIDE UNWANTED TONES

Removing unwanted tones does not need to be difficult. Simply use the opposing reflect in your color mix to achieve optimum results.





Color for professionals.
Shine, brilliance and technical excellence.